

Protect structures with reliable polyurea waterproofing technology

Hygrothane SwiftProof M 200 Waterproofing Membrane

Below Freezing Application

Contains 0 VOCs

100% Solids

Superb Adhesion

Long-Lasting Water Protection

Hygrothane SwiftProof M 200 is a spray applied, two-component polyurea waterproofing membrane designed to provide a seamless water-resistant protective barrier. The quick curing system is suitable for application in a wide range of temperatures, reducing delays caused by varying weather conditions. Applied using a high-pressure system, Hygrothane SwiftProof M 200 forms a durable membrane that delivers excellent adhesion with minimal surface preparation.



All Season Application

Applies and cures in cold outdoor temperatures down to -5°C



Monolithic Barrier

Seals around fasteners, joints and bridges cracks without limits on build thickness



Quick Installation & Curing

Rapid-cure formula and strong adhesion with minimal surface preparation



Durable & Lasting Finish

Excellent impact, chemical, puncture and abrasion resistance

Applications

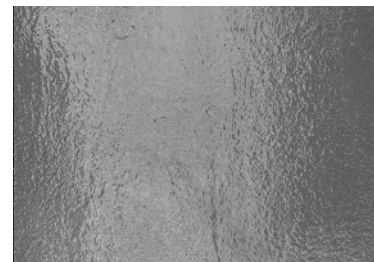
- › Waterproofing for concrete foundation walls
- › Storm water tank waterproofing
- › Protection for spray polyurethane foam insulation
- › Blindside waterproofing
- › Waterproofing for wastewater & sewage applications
- › Below grade waterproofing in both hydrostatic and non-hydrostatic conditions
- › Commercial open-cut waterproofing
- › Elevator pit waterproofing
- › Plaza deck waterproofing
- › Bridging cracks in concrete

Hygrothane SwiftProof M 200

Technical Data

Attribute	Test	Results
Tensile Strength	CAN/CGSB 37-GP-56M	392N (MD) 400N (XD)
Elongation	CAN/CGSB 37-GP-56M	334% (MD) 347% (XD)
Lap Peel	ASTM D1876	1680 N/m
Peel Strength	CAN/CGSB 37.58-M86 ASTM C794	1726 N/m
Dimensional Stability	CAN/CGSB 37.58-M86	0.38% (MD) 0.43% (XD)
Low Temp Flexibility	CAN/CGSB 37.58-M86 ASTM C794	-40°C No Crack
Resistance to Hydrostatic Head	ASTM D5385	92 m (301 ft)
Water Tightness*	CAN/CGSB 37.56-M86	Pass
Water Absorption	CAN/CGSB 37.58-M86	0.43%
Water Vapour Transmission	ASTM E96	58 ng / (Pa·s·m ²) @ 1.27mm or 50 mils
Horizontal Burn	UL 94	HB (Self extinguishes)
Static Puncture	CAN/CGSB 37-GP-56M	Pass (Rating 4) @ -15°C
Dynamic Puncture	CAN/CGSB 37-GP-56M	Pass (Rating 4) @ -15°C
Crack Bridging	ASTM C1305 (-20°C & 40°C)	Pass (No splitting or loss of adhesion)
Pull Adhesion on Concrete (With Primer)	ASTM D4541	5.84 MPa 847 lb/in ²
Pull Adhesion on Concrete (Without Primer)	ASTM D4541	3.56 MPa 516 lb/in ²
Adhesion of Poured Concrete**	ASTM D4541-M	10,000 N/m ² 1.45 lb/in ²
CCMC #	-	14144-R

SwiftProof™



REFERENCES:

All properties determined through testing by an accredited independent third party test facility.



GET IN TOUCH:

Elastochem Specialty Chemicals Inc.
1-877-787-2436
37 Easton Road
Brantford, ON N3P 1J4
www.elastochem.com



Note: Values are based on a Dry Film Thickness of 50 mils (1.27mm)

*After puncture, impact, chemical aging, heating aging and UV aging

**With acrylic concrete primer